

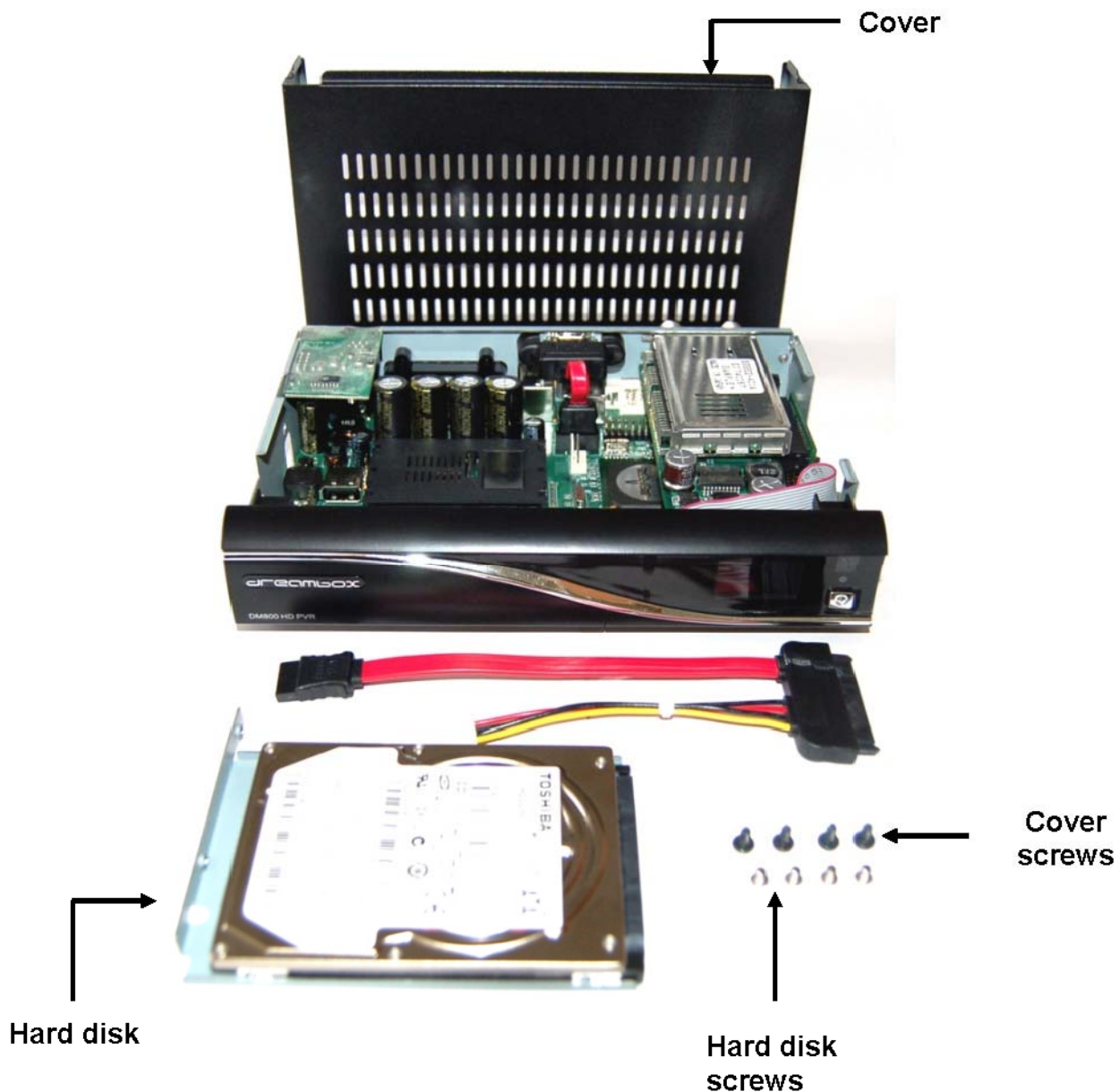
## 7. Hard disk operation

### 7.1 Mounting guidelines

This chapter describes how to mount a 2,5" SATA hard disk inside your Dreambox DM 800 HD PVR.

Please always adhere to ESD (Electrostatic Discharge) regulations when handling electronic devices. Make sure that you are grounded. Do not open the device in your living room or in any other rooms with carpeting or any other flooring that can carry an electrostatic charge. Remove all connection from the device. Only open the device with the tools depicted in this manual. Try to avoid direct contact with the main circuit board. If all this doesn't mean anything to you or if you have too many question, please contact your dealer or technician. Also notice the warranty notes in chapter 1.1 *Safety instructions*.

This picture shows everything you need for installing the hard disk.



**Parts list:**

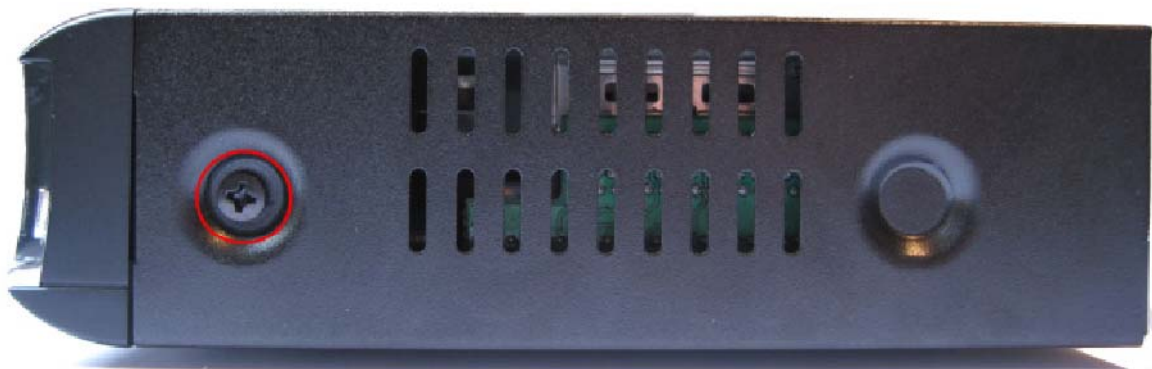
- 1x Dreambox DM 800 HD PVR (includes 4 phillips screws for the cover and 2 phillips screws for the hard disk cage).
- 1x SATA-Kabel for the hard disk (included in the shipping contents of your Dreambox DM 800 HD PVR)
- 1x Phillips screwdriver (not included)
- 1x 2,5" SATA hard disk of your choice (not included)
- 4x Hard disk screws (included in the shipping contents of your Dreambox DM 800 HD PVR)

**Action:**

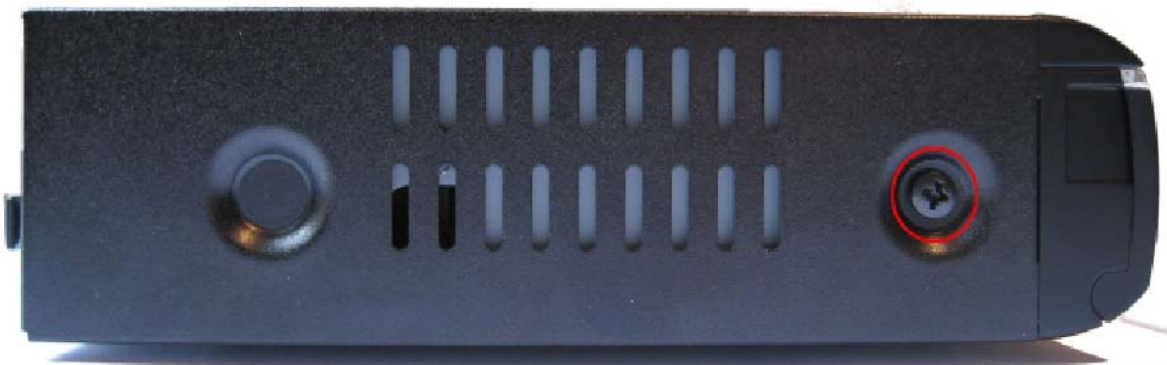
1. Remove these 2 screws on the rear panel.



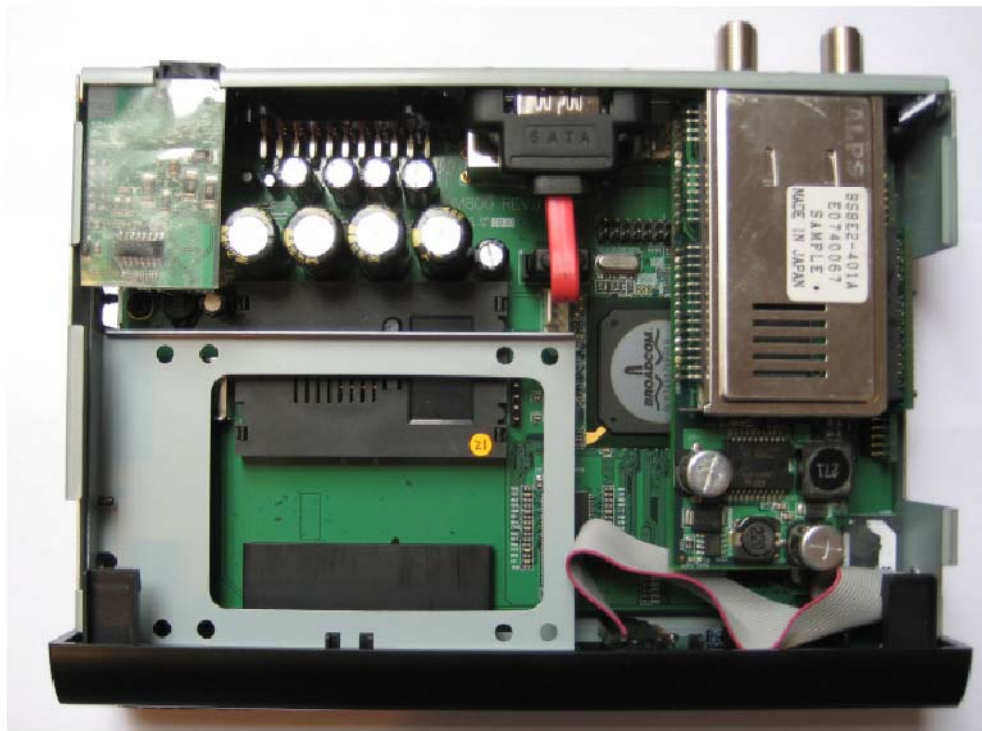
2. Remove this screw at the right side of the device.



3. Remove this screw at the left side of the device.



4. Lift the cover on the sides and slide it backwards.



5. Remove the 2 screws from the hard disk cage.



Remove the hard disk cage by lifting it upwards.

Now you need the Phillips screwdriver, the hard disk cage, the 4 hard disk mounting screws and your hard disk.

6. Attach the hard disk cage to the hard disk.

Pay attention to the correct mount of the hard disk in the hard disk cage.

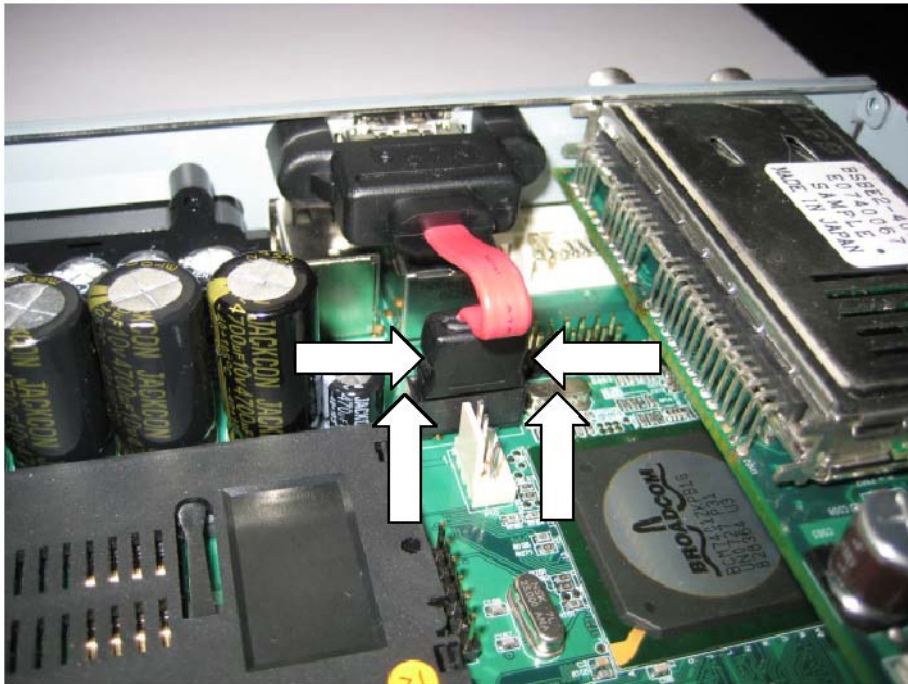


without screws

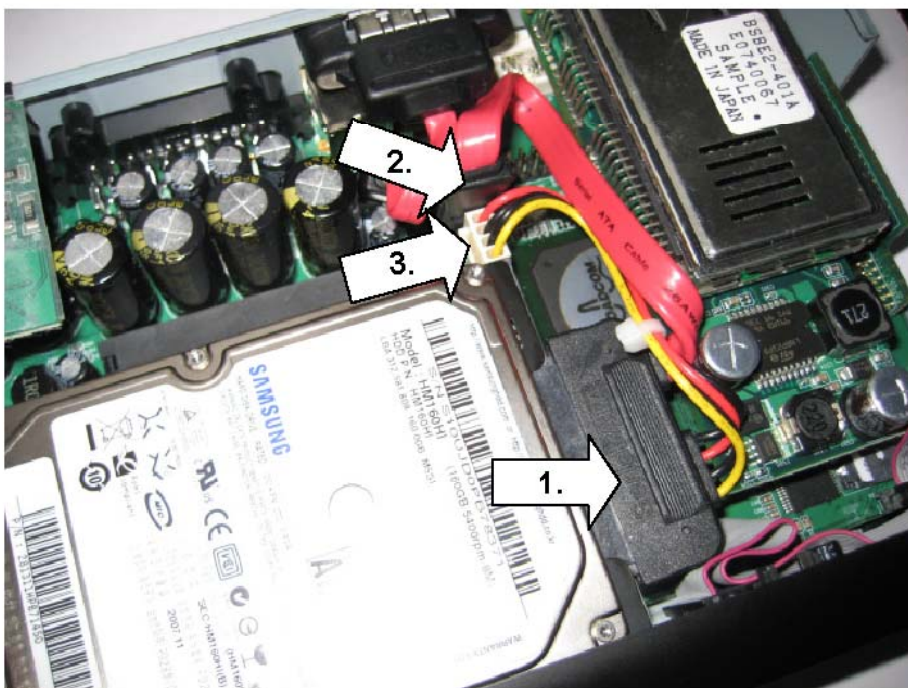


with screws

7. **Carefully** pull the SATA connector upwards with your thumb and index finger as shown below.



8. Connect the big black plug of the included SATA cable to your harddisk (Marker 1) and insert the hard disk cage back into your Dreambox. Connect the other end of the red SATA cable (Marker 2) to the socket from which you previously removed the eSATA cable. Connect the white power plug (Marker 3) to the white socket below the SATA socket.



9. Make sure that the cables are not bend too much.

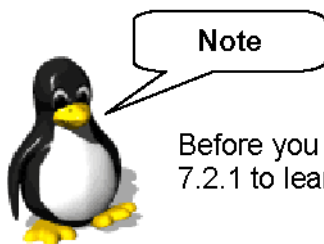


Screw the two screws back onto the hard disk cage. (see step 5.)

Slide the cover from the rear back onto the device.

Screw the one screw on each side and the two screws on the rear back into place.

Reattach all connector to your Dreambox. Attach the power cord as last.



Before you can use the hard disk you have to initialize it first. See section 7.2.1 to learn how it's done.

## 7.2 Management

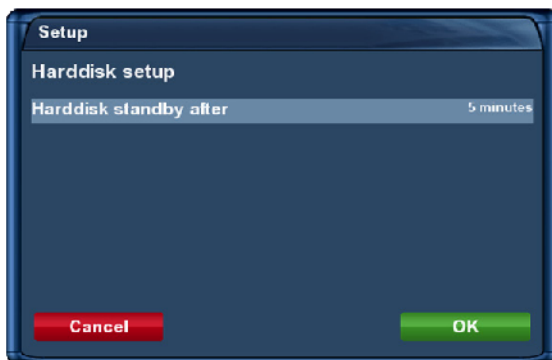
If no OSD menu is visible on your screen, press the **Menu-Button** to open the main OSD menu. Navigate to the option “Setup” and press the **OK-Button** to select.

1. Navigate to the option “System” and press the **OK-Button**

➤ The “System” menu will open up.

2. Navigate to the option “Harddisk...” and press the **OK-Button**

3. Navigate to the “Harddisk setup” option and press the **OK-Button**



You now can set the duration of time after which the harddisk will be put into standby-mode.

You can select from:

- No standby
- 10 or 30 seconds
- 1, 2, 5, 10, 20 or 30 minutes
- 1, 2 or 4 hours

Once you have selected the desired time press the **OK-Button** or the **green Options-Button** to get back into the harddisk menu.

## 7.2.1 Initialization

If no OSD menu is visible on your screen, press the **Menu-Button** to open the main OSD menu. Navigate to the option "Setup" and press the **OK-Button** to select.

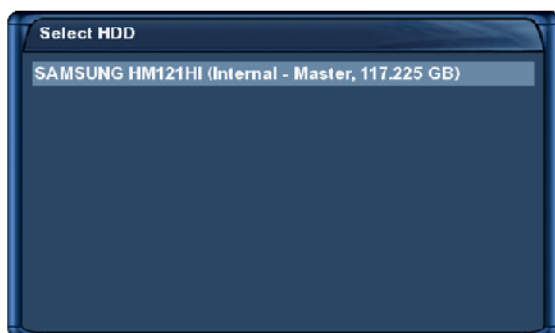
1. Navigate to the option "System" and press the **OK-Button**

➤ The "System" menu will open up.

2. Navigate to the option "Harddisk..." and press the **OK-Button**

3. Navigate to the "Harddisk setup" option and press the **OK-Button**

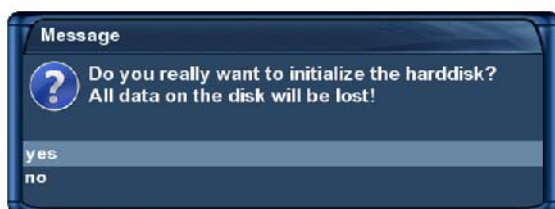
Navigate to the "Initialization" option and press the **OK-Button**.



If you have installed another hard disk this option will differ from the one depicted!



By pressing the red **Options-Button** you will initialize (format) the hard disk. After you confirm the safety question the initialization process starts.



**WARNING!!!**

All data stored on the HDD will be lost.

